



MAYFIELD
VILLAGE

MAYOR BRENDA T. BODNAR
mayfieldvillage.com

6622 Wilson Mills Road
Mayfield Village, OH 44143
440.461.2210 • Fax 440.461.7349
ContactUs@mayfieldvillage.com

MEMORANDUM

TO: Architectural Review Board

FROM: Diane Wolgamuth, Director of Administration
Shane McAviney, Director of Parks & Recreation

DATE: December 11, 2023

RE: **The Grove – Permanent Restrooms**

Dear Architectural Review Board Members,

In March of this year, the Village received a \$250,000 grant from Cuyahoga County to construct permanent restrooms at The Grove Amphitheatre. Working with Landscape Architect Jim McKnight, the designer of the restrooms at the softball and soccer fields, we developed the attached site plan, floor plan and renderings of the proposed 15-stall restroom facility.

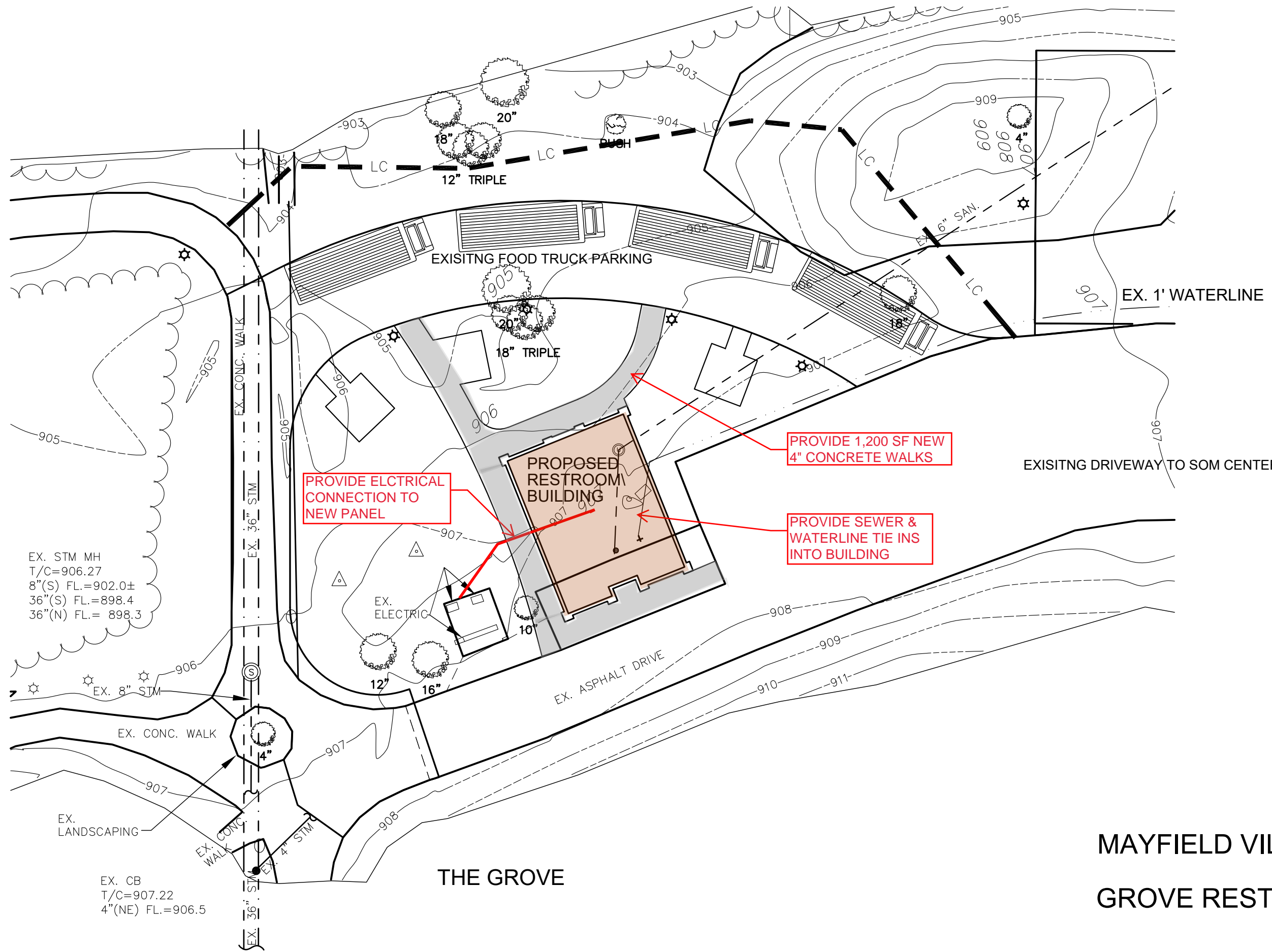
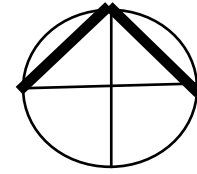
The specifications include the following:

- inside and outside lighting,
- a cement floor (sealed and finished),
- no air-conditioning or heat,
- floor-mounted toilets,
- an 81-gallon well tank to ensure adequate water pressure for the number of fixtures,
- traditional fixtures as opposed to electronic fixtures, similar to the restrooms at the soccer and softball fields,
- split-face masonry blocks to match the block used in the bandshell,
- a standing-seam metal roof for longevity, and
- an enclosed interior ceiling for added privacy and improved insulation.

The project was advertised for bids, which were opened on September 22, 2023. Cianci Construction was the low bidder at \$406,000 and Council approved their contract on October 16, 2023. Depending on the weather, we anticipate that much of the construction can be done over the winter months to ensure that the facility is complete in advance of next summer's entertainment schedule.

We look forward to attending the ARB meeting on December 14 to review the project with you in more detail and answer any questions you might have. We noted Mr. Varrelman's comments about orientation and agree that screening will likely be needed. Contingency funds are included in the bid that we anticipate will be sufficient to cover the cost.

1"=20'-0"



PROVIDE ELCTRICAL CONNECTION TO NEW PANEL

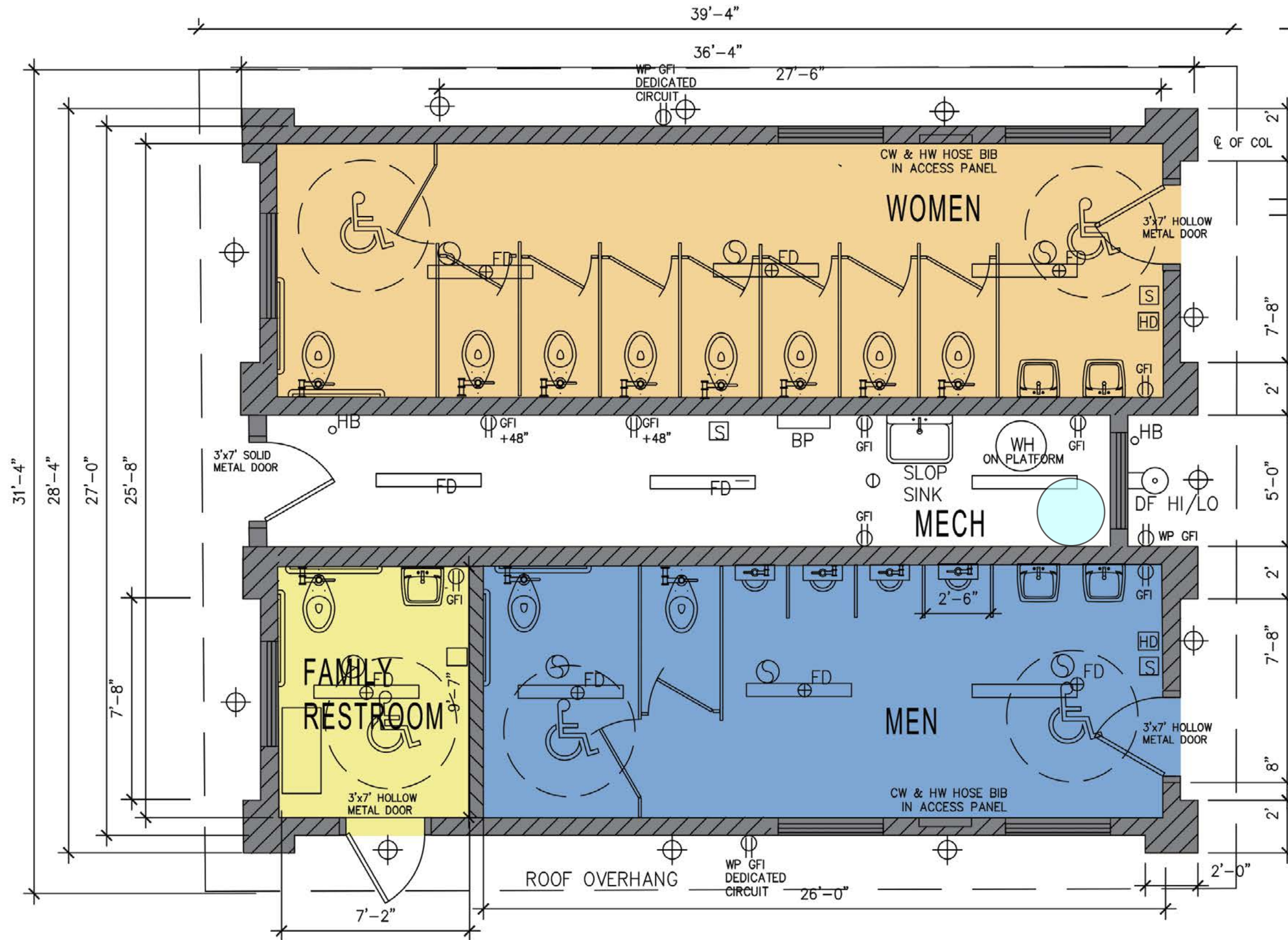
PROVIDE 1,200 SF NEW 4\"/>

PROVIDE SEWER & WATERLINE TIE INS INTO BUILDING

MAYFIELD VILLAGE GROVE RESTROOM SITE PLAN

BUILDING LAYOUT

1/4" = 1'-0"



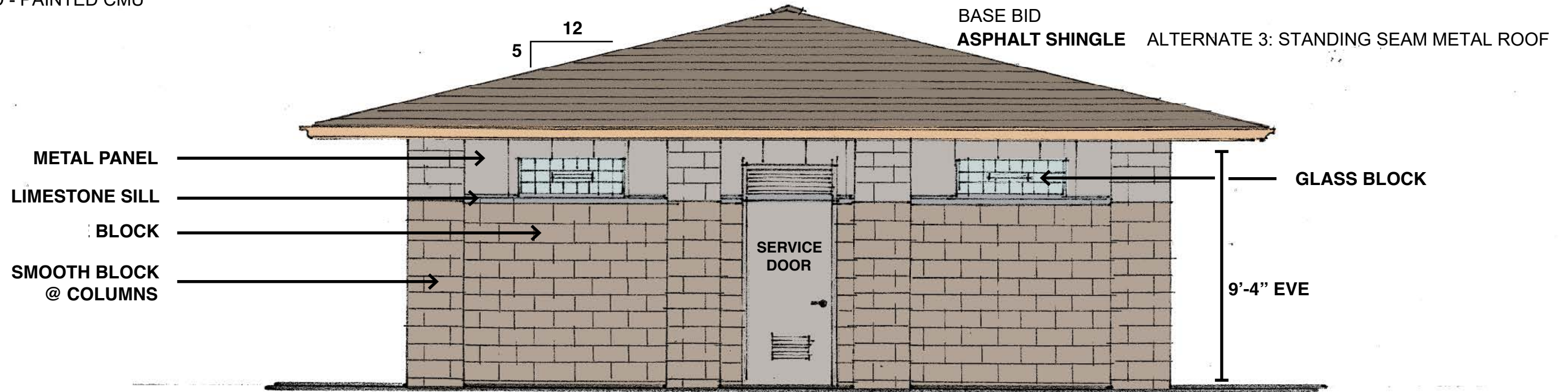
KEY

- BP BREAKER PANEL
200 AMP 42 SPACE
- HB HOSE BIB
3 φ 120V/208V
- FD⊕ FLOOR DRAIN
- ⊙ DF DRINKING FOUNTAIN
HI/LO
- WH WATER HEATER
- ⊕ DUPLEX GFI OUTLET
- S MANUAL SWITCH
- ⊙ EXHAUST FAN
- 4' I LED LIGHTS
SOFFIT LIGHT
- ⊕ EXTERIOR
- GLASS BLOCK
- HD WARM HAND DRYER
- WP WEATHER PROOF COVER
- 80 GAL WATER PRESSURE TANK

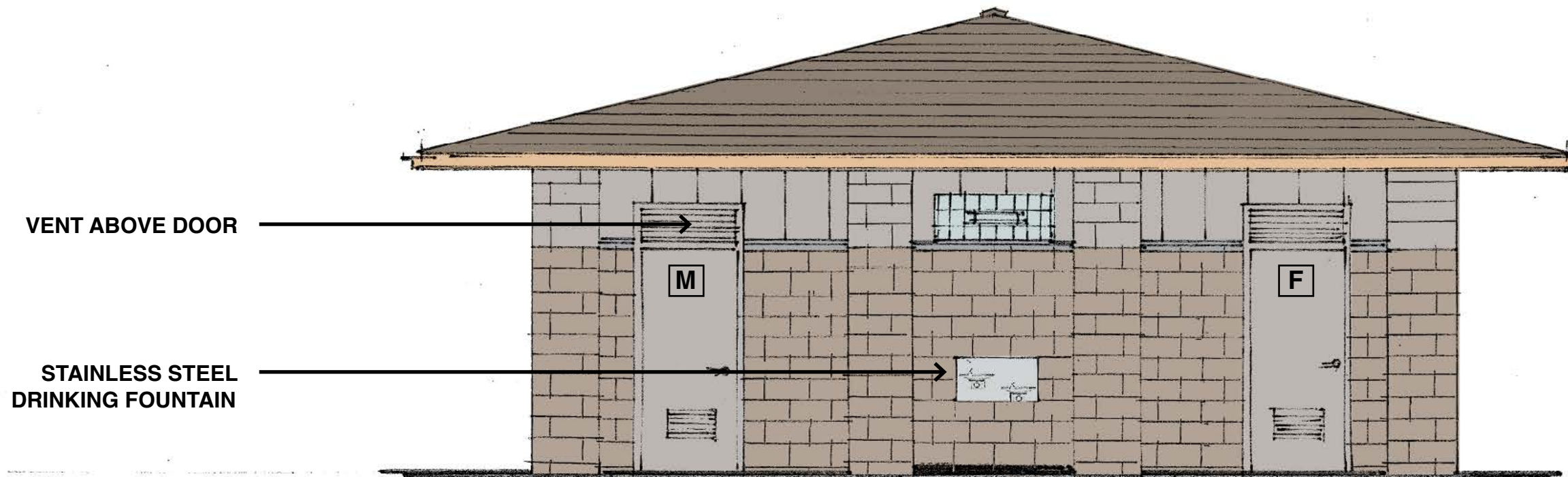
BUILDING ELEVATION

ALTERNATE 1 - SPLITFACE BLOCK
MATERIALS TO MATCH GROVE BANDSHELL

BASE BID - PAINTED CMU



REAR ELEVATIONS

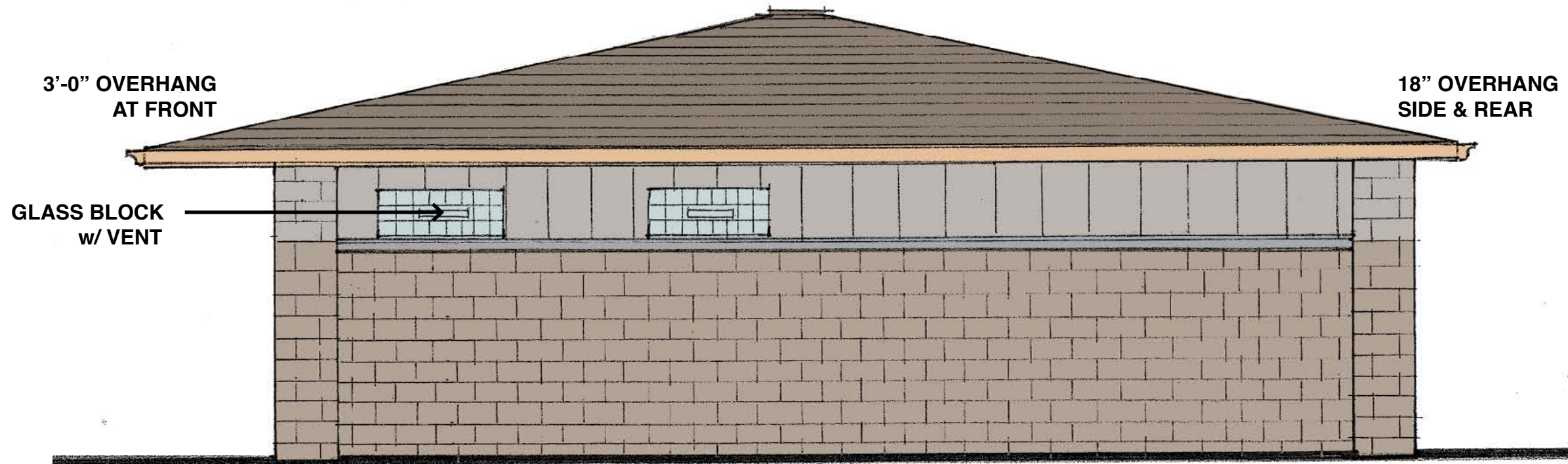


FRONT ELEVATIONS

BUILDING ELEVATION



SIDE ELEVATION



SIDE ELEVATION