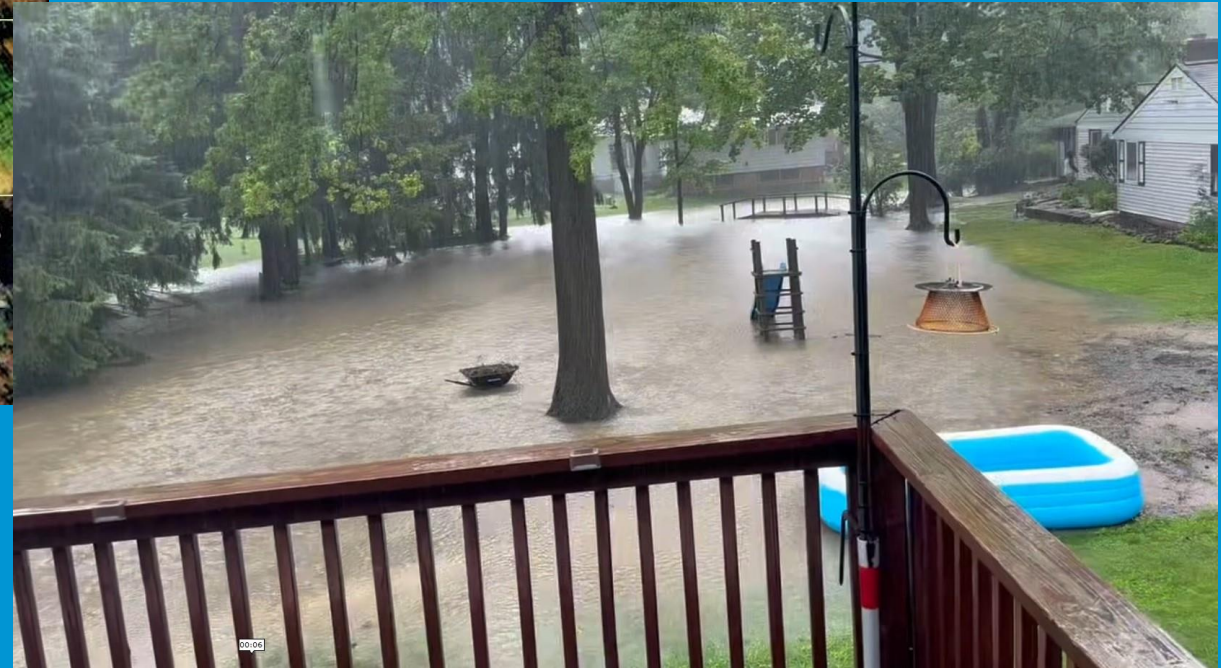
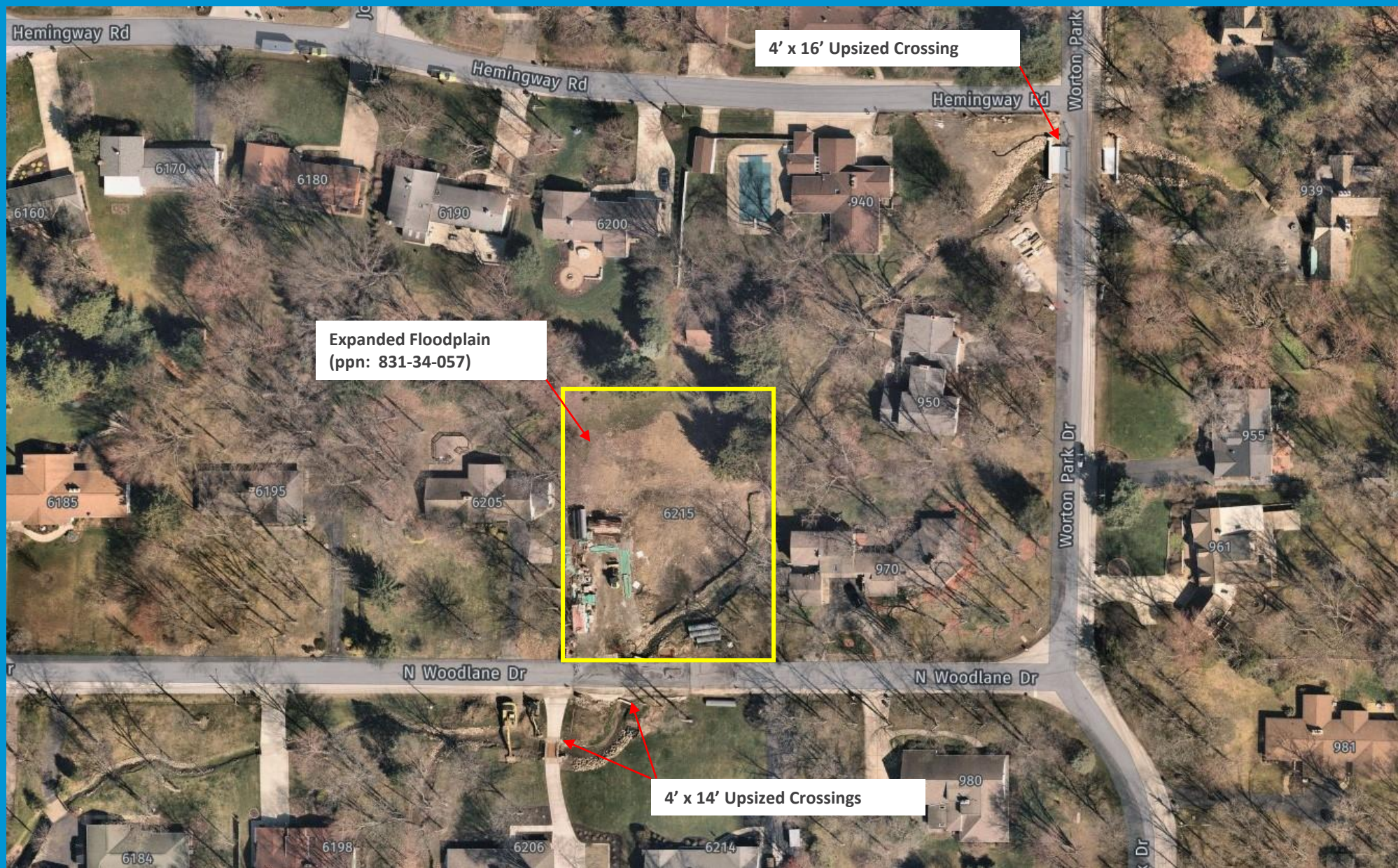


# Worton Park Drive Neighborhood – August 11-12, 2023 Storm Event







**Northeast Ohio  
Regional Sewer District**

Aerial View of Beechers Brook Phase I Work



# Northeast Ohio Regional Sewer District

## Rainfall Statistics Report

8/11/23 0:00 - 8/12/23 23:59

Site Location	Peak Accumulation (inches)										
	5-Minute	10-Minute	15-Minute	30-Minute	1-Hour	2-Hour	3-Hour	6-Hour	12-Hour	24-Hour	48-Hour
Beachwood	0.36	0.62	0.81	0.94	1.08	1.11	1.12	1.14	1.15	2.16	2.21
Brecksville	0.08	0.13	0.15	0.19	0.31	0.37	0.42	0.60	0.63	0.88	0.89
Brook Park	0.22	0.29	0.35	0.47	0.53	0.64	0.75	0.77	0.81	1.07	1.08
Cleveland Industrial Pkwy	0.27	0.39	0.47	0.49	0.50	0.70	0.70	0.70	0.82	1.52	1.52
Dille Ave PS	0.20	0.30	0.37	0.43	0.57	0.71	0.74	0.79	0.80	1.12	1.13
Division Ave PS	0.38	0.57	0.67	0.70	0.92	1.03	1.05	1.19	1.20	1.61	1.62
Easterly WWTP	0.21	0.31	0.35	0.45	0.50	0.63	0.65	0.65	0.66	1.22	1.23
Independence	● 0.47	0.72	0.87	1.04	1.09	1.13	1.22	1.50	1.66	2.25	2.25
James Rhodes HS	0.25	0.35	0.44	0.47	0.48	0.70	0.70	0.70	0.70	1.14	1.14
Jennings PS	0.18	0.23	0.34	0.42	0.44	0.65	0.65	0.65	0.65	1.11	1.11
Macedonia	0.15	0.20	0.30	0.37	0.37	0.40	0.40	0.55	0.56	0.72	0.73
Maple Heights	● 0.48	0.70	0.85	1.09	1.18	1.19	1.20	1.46	1.59	2.42	2.42
Mary Street PS	0.25	0.37	0.44	0.48	0.55	0.81	0.82	0.87	0.88	1.33	1.33
Mayfield Heights	0.29	0.50	0.66	0.85	1.19	1.35	1.36	1.55	1.55	2.64	2.64
Moreland Hills	0.17	0.27	0.30	0.38	0.48	0.53	0.53	0.84	0.95	1.43	1.44
North Olmsted	0.23	0.37	0.47	0.75	0.84	0.94	1.04	1.04	1.07	1.63	1.64
North Royalton	0.29	0.40	0.42	0.45	0.58	0.62	0.67	0.98	0.99	1.39	1.40
Oakwood	0.18	0.21	0.24	0.28	0.28	0.49	0.49	0.49	0.50	1.00	1.01
Olmsted Falls	0.39	0.60	0.79	0.87	1.05	1.21	1.27	1.34	1.42	1.65	1.67
Parma	0.27	0.46	0.52	0.60	0.64	0.71	0.74	0.81	0.89	1.28	1.29
Richfield	0.19	0.26	0.29	0.33	0.38	0.47	0.50	0.95	1.06	1.22	1.24
Shaker Heights	0.33	0.57	0.65	0.74	0.90	0.97	0.99	1.01	1.03	1.53	1.53
South Euclid	0.33	0.55	0.62	0.69	0.83	0.91	0.91	1.05	1.05	2.01	2.01
Southerly WWTC	0.23	0.31	0.42	0.46	0.47	0.62	0.62	0.66	0.84	1.46	1.46
Strongsville C WWTP	0.40	0.61	0.73	0.80	0.80	0.92	1.04	1.06	1.19	1.45	1.47
Strongsville Foltz	0.12	0.21	0.22	0.22	0.31	0.44	0.46	0.66	0.66	1.02	1.03
University Heights	● 0.56	● 0.76	0.85	0.96	1.18	1.29	1.67	2.18	2.30	● 3.03	3.15
Wade Park	0.28	0.46	0.60	0.67	0.84	0.95	1.07	1.35	1.36	1.93	1.94
Westerly WWTP	0.35	0.49	0.58	0.60	0.82	0.88	0.90	0.94	0.94	1.34	1.34
Westlake	0.33	0.60	0.77	1.05	1.14	1.37	1.45	1.45	1.46	2.86	2.87

< 1-yr, 1-yr, or 2-yr event
● 5-yr or 10-yr event
● 25-yr or 50-yr event
● 100-yr event or greater

Table uses NOAA Atlas 14 Point Precipitation Estimates for Precipitation Depth

2-year Storm Event

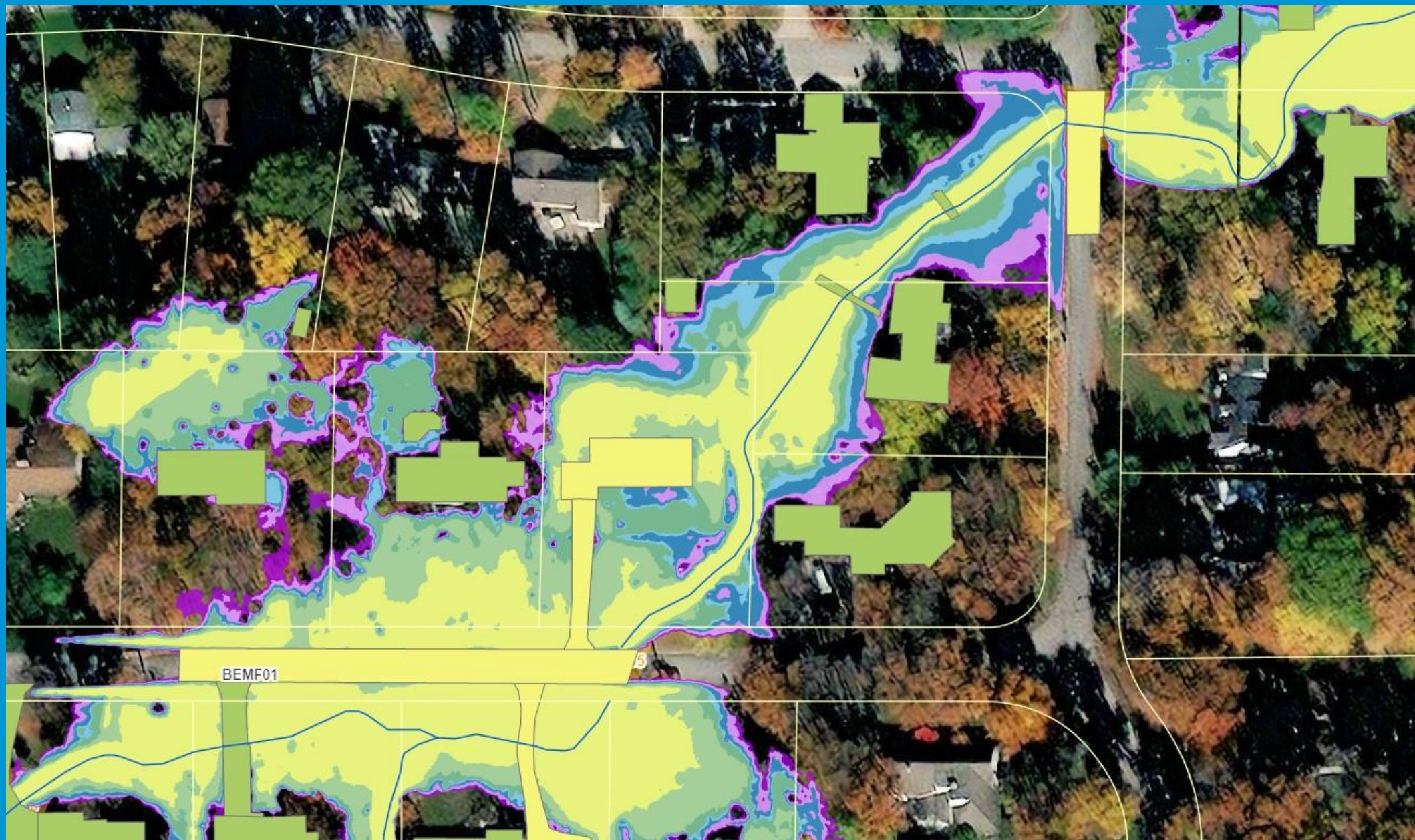




**Northeast Ohio  
Regional Sewer District**

2-year Design Storm Inundation Map





**Northeast Ohio  
Regional Sewer District**

100-year Design Storm Inundation Map





**Northeast Ohio  
Regional Sewer District**

North View of Flooding from 970 Worton Park Drive





**Northeast Ohio  
Regional Sewer District**

Southwest View of Floodplain and N. Woodlane Drive





**Northeast Ohio  
Regional Sewer District**

Aerial View of Beechers Brook Phase II Work



- **Francisco Rivera**, Watershed Team Leader  
RiveraF@neorsd.org

